

INSTALLATION INSTRUCTIONS

Reflector Kit

For Use in LED, Ltd. R84-802, R63-602 & R42-402

Made in the U.S.A.



Leading Energy Designs, Ltd.
www.LeadingEnergyDesigns.com
815-338-8852



CAREFULLY READ ALL THE INSTRUCTIONS, NOTICES AND WARNINGS PERTAINING TO THIS PRODUCT PRIOR TO INSTALLATION.

NOTICE

- This manual contains important information about the installation of this product. This information should be given to the owner and/or operator of this product.
- Failure to follow safety warnings and instructions can result in severe injury, death or property damage. These instructions are provided to avoid problems that may occur from the improper assembly and installation. Moreover, all warranties are void for failure to follow these assembly instructions and/or safety warnings.
- If you have questions regarding proper installation of this product or local electric codes consult a qualified electrician.
- Visit www.LeadingEnergyDesigns.com for additional free copies of these instructions.
- LED, Ltd. Reflector Kit is designed only to be installed on to LED, Ltd. R84-802, R63-602 and R42-402 LED Retrofit Kit product

WARNING

WARNING - Risk of fire or electric shock. LED retrofit kit installation requires knowledge of luminaires' electrical systems. If not qualified, do not attempt installation and contact a qualified electrician.

WARNING - Risk of fire or electric shock. Only install this kit on to LED, Ltd. R84-802 and R42-402 LED Retrofit Kit products.

WARNING - To prevent wiring damage or abrasion, do not expose wiring to edges of sheet metal or other sharp objects.

WARNING - Do not look directly at LED light source while light source is on. Momentary blindness and/or eye damage could result!

WARNING - Do not make or alter any open holes in R84-802, R63-602 or R42-402 product during Reflector Kit installation.

WARNING - Do not make or alter any open holes in an enclosure of wiring or electrical components during kit installation.

Tools Needed for Installation

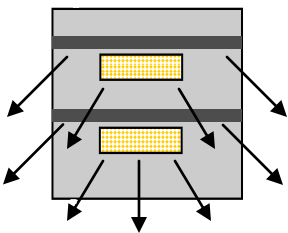
- pliers
- Phillips-head screwdriver

Recommended Safety Equipment

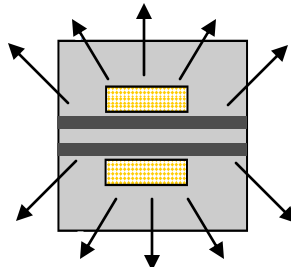
- safety goggles
- hard hat
- electric panel lockout tag

Step 1 Determine Desired Light Pattern and Assess Reflector(s) Installation Location(s)

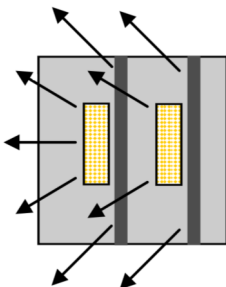
R84-802



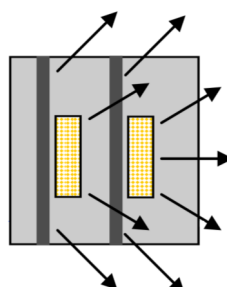
Forward Throw Cut-off Pattern



Basic Type V Long Pattern

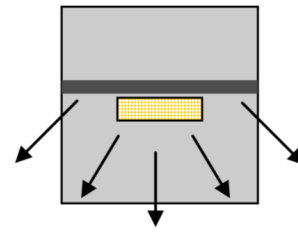


Side Throw Left Pattern

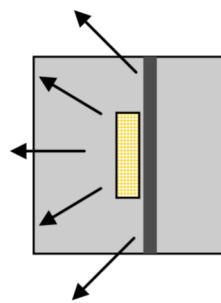


Side Throw Right Pattern

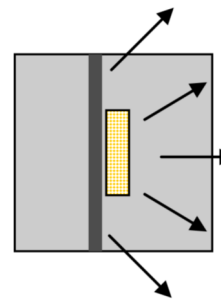
R63-602 & R42-402



Forward Throw Cut-off Pattern



Side Throw Left Pattern



Side Throw Right Pattern



Step 2 Disconnect Power to Fixture

- Disconnect the power at the panel board (circuit breaker box) before beginning installation and/or servicing.
- Lock the power disconnect switch in the open position and tag it to prevent unexpected application of power.

Step 3 Inspect Reflector Kit Parts & Remove Protective Film

- Open packaging and ensure reflector shields are not damaged.
- Remove protective film from each shield. (See Image 1)

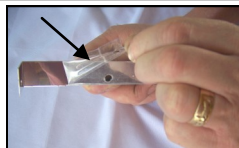


Image 1 - Remove Protective Film

Note - All components of this kit have been visually inspected for physical defects and/or deficiencies prior to shipment. However, purchasers should inspect all components enclosed in kit prior to assembly and installation. Do not use any components of kit which have been damaged during shipping. Contact LED, Ltd. for replacement parts.

Step 4 Remove 4-40 Screw

- The reflector is attached using 1 (one) of the pre-existing 4-40 screws on R84-602, R63-602 or R42-402. (see Image 2)
- Reflector has two predrilled holes. The larger hole is a 4-40 screw head clearance hole. The smaller hole is used to secure shield with 4-40 screw. (See Image 3)
- Determine which screw needs to be removed based on pre-determined shield location (see Step 1).
- Remove 1 (one) 4-40 screw from Retrofit Kit. (see Image 2)

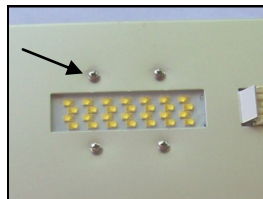


Image 2 - Pre-existing 4-40 Screw

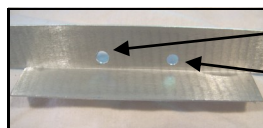


Image 3 - Shield Holes

Step 5 Set Reflector in Place

- Set reflector in desired location and align screw & clearance holes. (See Image 4)

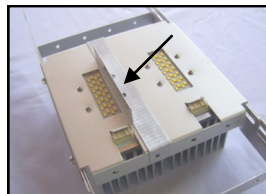


Image 4 - Set Reflector in Place

Step 6 Secure Reflector

- Use removed 4-40 screw to screw in and secure reflector. (See Image 5)

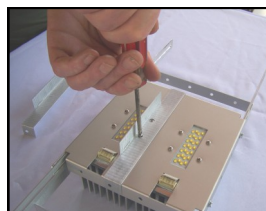


Image 5 - Secure Reflector With Screw

Step 7 Repeat Process for Each Reflector to be Installed

- Repeat process for each reflector to be installed.

Step 8 Install and Orient R84-804, R63-602 or R42-402

- If not already installed, install R84-802, R63-602 or R42-402 using retrofit kit product installation guide.
- If needed or desired, R84-802, R63-602 or R42-402 (light source) can be rotated and oriented 90° in either direction by removing preattached brackets and reattaching to adjacent sides. Remove brackets by unscrewing bracket screws from mounting plate and slide brackets out (see Images 6 & 7).



Image 5 – Original Bracket/Light Source Orientation



Image 6 – Reattached Brackets/Light Source 90° Orientation

Customer Support

If you require replacement parts and/or additional information regarding this product, please contact Leading Energy Designs, Ltd.

Business Hours: Monday - Friday (Except Holidays), 8:00am to 4:30pm Central Time.

Phone: 815-338-8859

Internet: www.LeadingEnergyDesigns.com

THIS REFLECTOR KIT INCLUDES ONLY THOSE COMPONENTS AND INSTRUCTIONS RECOMMENDED FOR INSTALLATION ONTO LED, LTD.'S R84-802, R63-602 AND R42-402 RETROFIT KIT PRODUCTS. USE OF ANY OTHER COMPONENTS AND/OR MODIFICATIONS OF THE KIT'S COMPONENTS AND/OR DEVIATION FROM INSTRUCTIONS WILL MAKE PRODUCT WARRANTY NULL AND VOID. LEADING ENERGY DESIGNS, LTD. IS NOT LIABLE FOR ANY DAMAGES CAUSED BY CHANGES OR MODIFICATIONS.



Leading Energy Designs, Ltd.
www.LeadingEnergyDesigns.com
815-338-8852